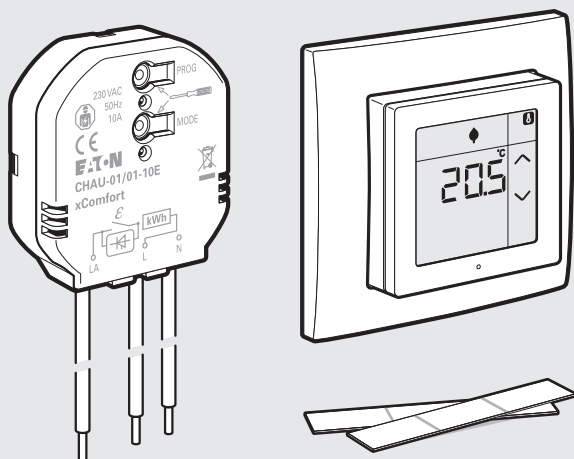


Quick Installation Card

Hurtig installasjon kort - Snelle installatiekaart -
Schnellinstallationskarte - Karta pro rychlou instalaci



Content - Innhold - Inhoud - Inhalt - Obsah

Technical Data / Technische gegevens / Tekniske data / Technische Daten / Technická data

Power supply 230 VAC +10% -15%, 50Hz

Load Load: R,L,C,LED: 10A



Eaton Patented Hybrid Zero-cross switching technology

Standby 230mW (TYP)

Battery 2 x LR03 AAA-Micro 1.5V

Battery lifetime 2 years (TYP)

RF 868,3MHz (xComfort compatible)

Degree of protection IP20

Actor -5 to +55°C

Sensor 0 to +40°C

EATON

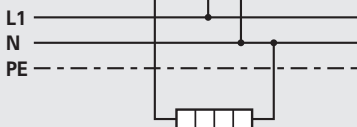
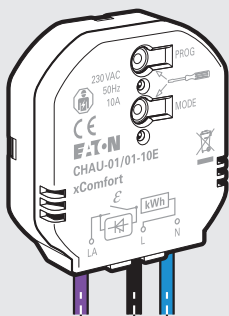
Powering Business Worldwide



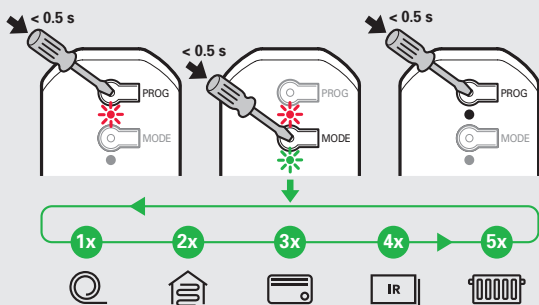
www.eaton.com/recycling



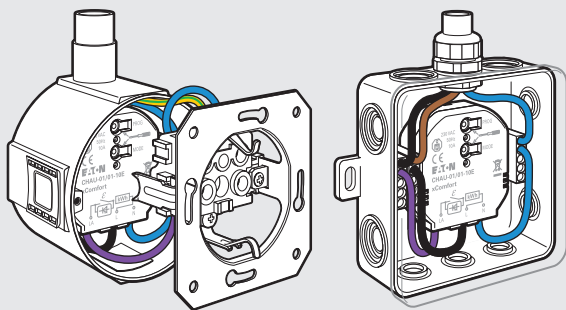
1



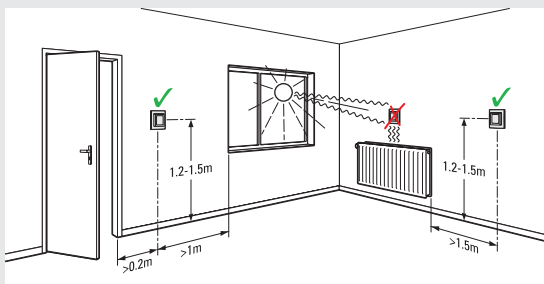
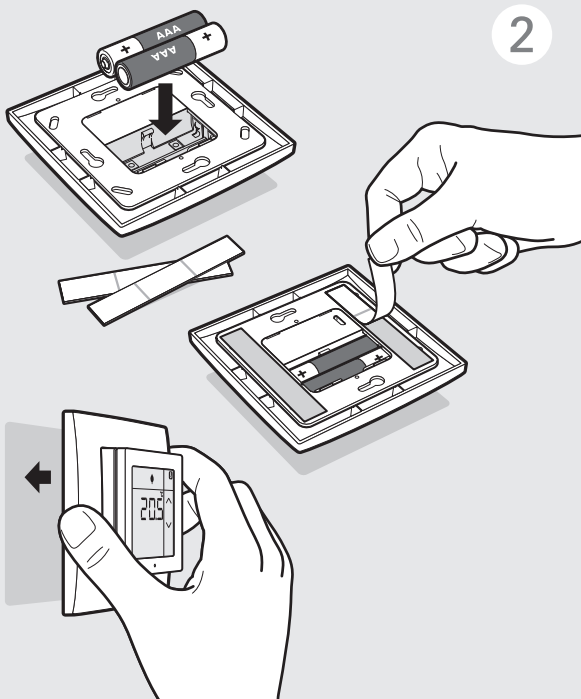
Optional select heating profile



Mounting examples



2



Pre-defined Week-Program

Event Mode	Event 1 Day	Event 2 Eco	Event 3 Day	Event 4 Eco
Mo	6:00	8:00	14:00	23:00
Tu	6:00	8:00	14:00	23:00
We	6:00	8:00	14:00	23:00
Th	6:00	8:00	14:00	23:00
Fr	6:00	8:00	14:00	23:59
Sa	8:00	23:59		
Su	8:00	23:00		
Su	8:00	23:00		

Pre-Defined Temperature Set-Points

Mode	Temperature
Day	21°C
Eco	19°C
Night	18°C
Protection	10°C

See Room Controller Touch User Manual:
Page 11 chapter 2.7.1 Change Pre-Defined
Set-Point Temperature

See Room Controller Touch User Manual:
Page 9 chapter 2.6.1 Activate/Deactivate Week Program
Page 13 chapter 2.7.2 Edit Week Program Timer



Room Controller Touch User Manual

www.eaton.eu/xcomfort

➡ Room Controller Touch ➡ User manual

www.eaton.com/WirelessSwitching

Declaration of Conformity

We, EATON Industries (Austria) GmbH
3943 Schrems, Eugenia 1
Austria

declare under our sole responsibility as the manufacturer that the product (family)

**Eaton - Heating Actuator,
CHAU-01/01-10E, CHAU-01/01-16E (contains RF-
Modul CSCZ-03/xx)**

(the declaration of conformity applies to all listed types within our actual product catalogue)

provided that it is installed, maintained and used in the application intended for, with respect to the relevant manufacturers instructions, installation standards and "good engineering practices"

complies with the provisions of Council directive(s):

RED Directive 2014/53/EU
RoHS Directive 2011/65/EU

based on compliance with following standard(s):

EN 301489-3 V2.1.1, EN 300220-2 V3.1.1, EN 60669-2-1:2010, EN 50428:2005 + A1:2007 + A2:2009, EN 50491-5-1:2010, EN 50491-5-2:2010, EN 60950-1:2009 + A1:2009 + A1:2010 + A12:2011 + A2:2013, EN 62479:2010, EN 50581:2012

EU- type examination performed by:
TÜV Austria Services GmbH, Notified Body
1230 Vienna, Deutschstrasse 10, Austria

Affixing date of CE mark: 2018

Doc.Id.: CHAU-0101-10E_CHAU-0101-16E_010318


Ferdinando Ceccarelli

Senior Vice President
General Manager

01.03.2018


Friedrich Schröder

Director Quality
& Systems

Declaration of Conformity

We, EATON Industries (Austria) GmbH
3943 Schrems, Eugenia 1
Austria

declare under our sole responsibility that the product (family)

**Eaton - Room Controller Touch,
CRCA-00/08; CRCA-00/09; CRCA-00/10; CRCA-00/11
(contains RF-Modul CSCZ-01/xx)**

(the declaration of conformity applies to all listed types within our actual product catalogue)

provided that it is installed, maintained and used in the application intended for, with respect to the relevant manufacturers instructions, installation standards and "good engineering practices"

complies with the provisions of Council directive(s):

RED Directive 2014/53/EU
RoHS Directive 2011/65/EU

based on compliance with following standard(s):

EN 301489-3 V2.1.1, EN 300220-2 V3.1.1, EN 50491-5-1:2010, EN 50491-5-2:2010, EN 60950-1:2009 + A1:2009 + A1:2010 + A12:2011 + A2:2013, EN 62479:2010, EN 50581:2012

EU- type examination performed by:
TÜV Austria Services GmbH, Notified Body
1230 Vienna, Deutschstrasse 10, Austria

Affixing date of CE mark: 2018

Doc.Id.: CRCA-0008_CRCA-0009_CRCA-0010_CRCA-0011_171117


Ferdinando Ceccarelli

Senior Vice President
General Manager

17.11.2017


Friedrich Schröder

Director Quality
& Systems